



Crabtree, Rohrbaugh & Associates

# WYOMISSING AREA SCHOOL DISTRICT

CONSTRUCTION UPDATE

August 22, 2022

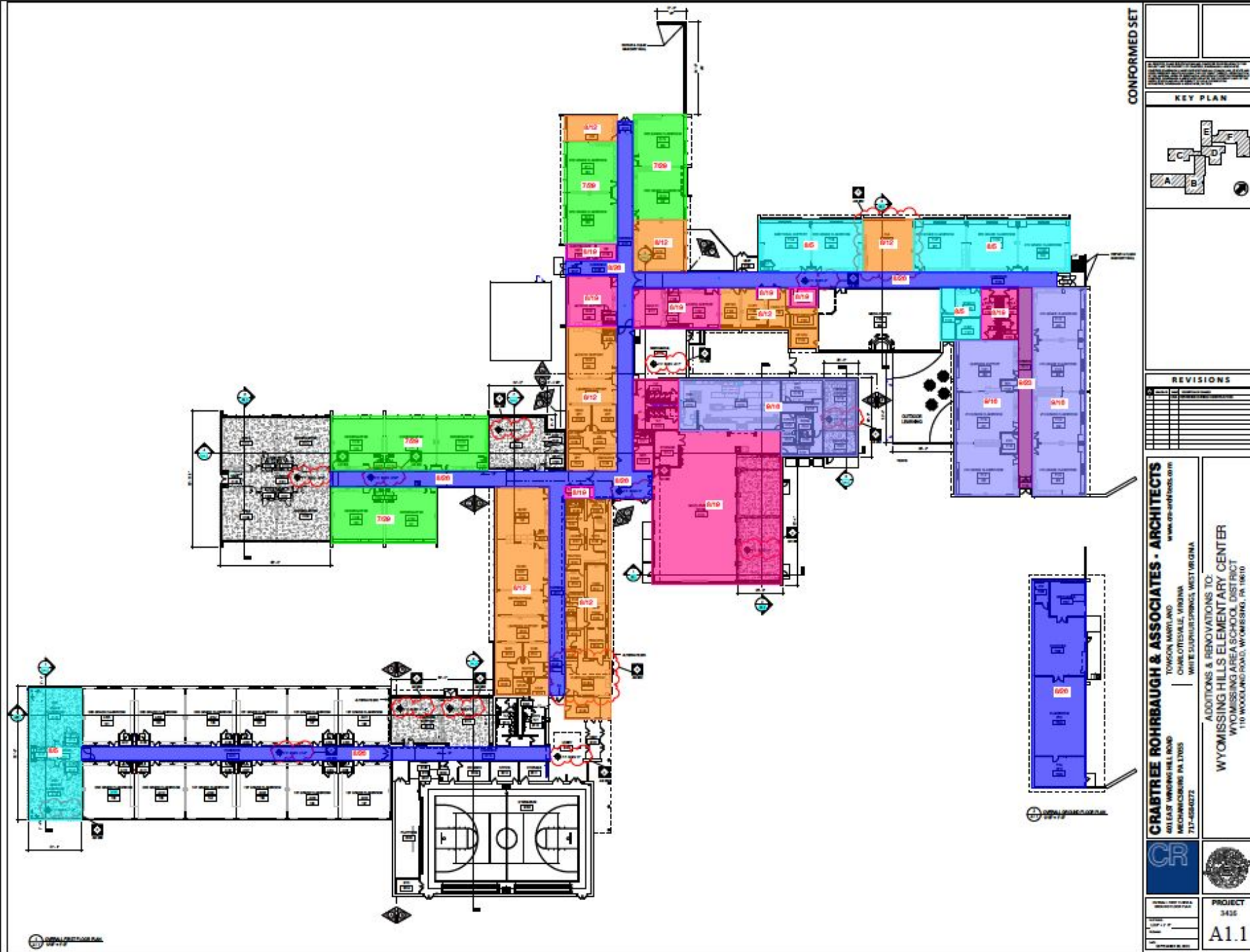
# WYOMISSING HILLS EC PHASING PLAN

- PHASE 1.1** JULY 2021 - AUGUST 18, 2021 PARTIAL COMPLETION
- PHASE 1.2** LAST WEEK OF NOVEMBER 2021 SUBSTANTIAL COMPLETION
- PHASE 2.1** JULY 2021 - AUGUST 18, 2021 PARTIAL COMPLETION
- PHASE 2.2** JUNE 2022 - AUGUST 2022 SUBSTANTIAL COMPLETION
- PHASE 3** AUGUST 2021 - FEBRUARY 2022
- PHASE 4** MARCH 2022 - APRIL 2022
- PHASE 5** MAY 2022 - JUNE 2022
- PHASE 6** JUNE 2022 - AUGUST 2022
- PHASE 7** JUNE 2022 - SEPTEMBER 2022

SUBSTANTIAL COMPLETION 443 CALENDAR DAYS AFTER NTP DATE.  
FINAL COMPLETION 504 CALENDAR DAYS AFTER NTP DATE.



# WYOMISSING HILLS CONSTRUCTION TURNOVER SCHEDULE



- Green - Occupied
- Light Blue - 12th
  - 25th turnover
  - Windows
  - Ceilings
  - Flooring
- Orange - 12th
  - 25th turnover
  - Windows
  - Flooring
- Pink - 19th
  - 28th turnover
  - Flooring
  - Fixtures
  - Doors
- Dark Blue - 26th
  - 28th turnover
  - Flooring
- Purple - Oct 1st
- Parking Lot - 8/19
  - 27th turnover
  - Paving
  - Line striping
- Gym Floor - 8/30
  - Sanding
  - Seal coat/stripping

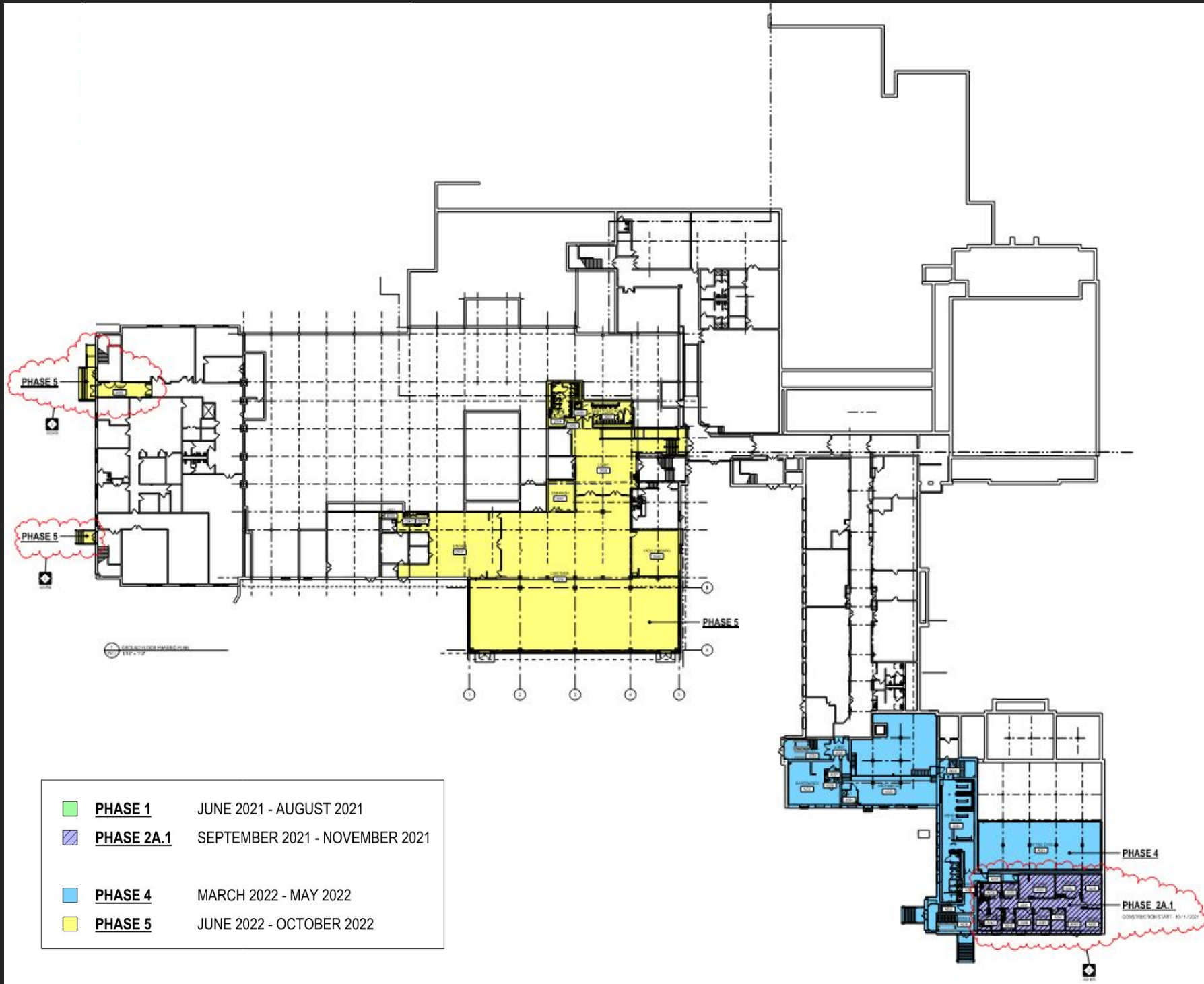
# WYOMISSING HILLS CONSTRUCTION PICTURES



# WYOMISSING HILLS CONSTRUCTION PICTURES

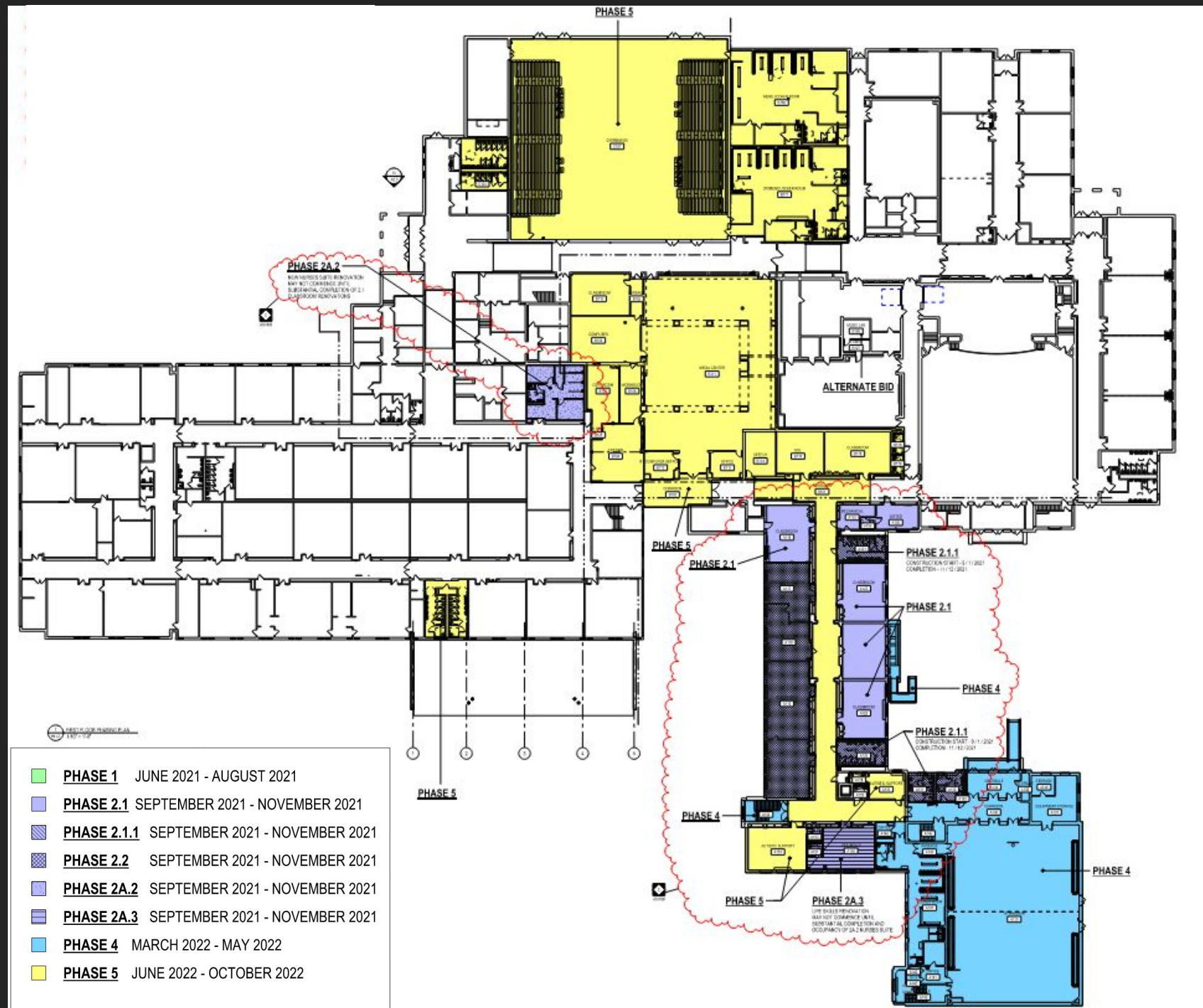


# WAHS PHASING PLAN – GROUND FLOOR



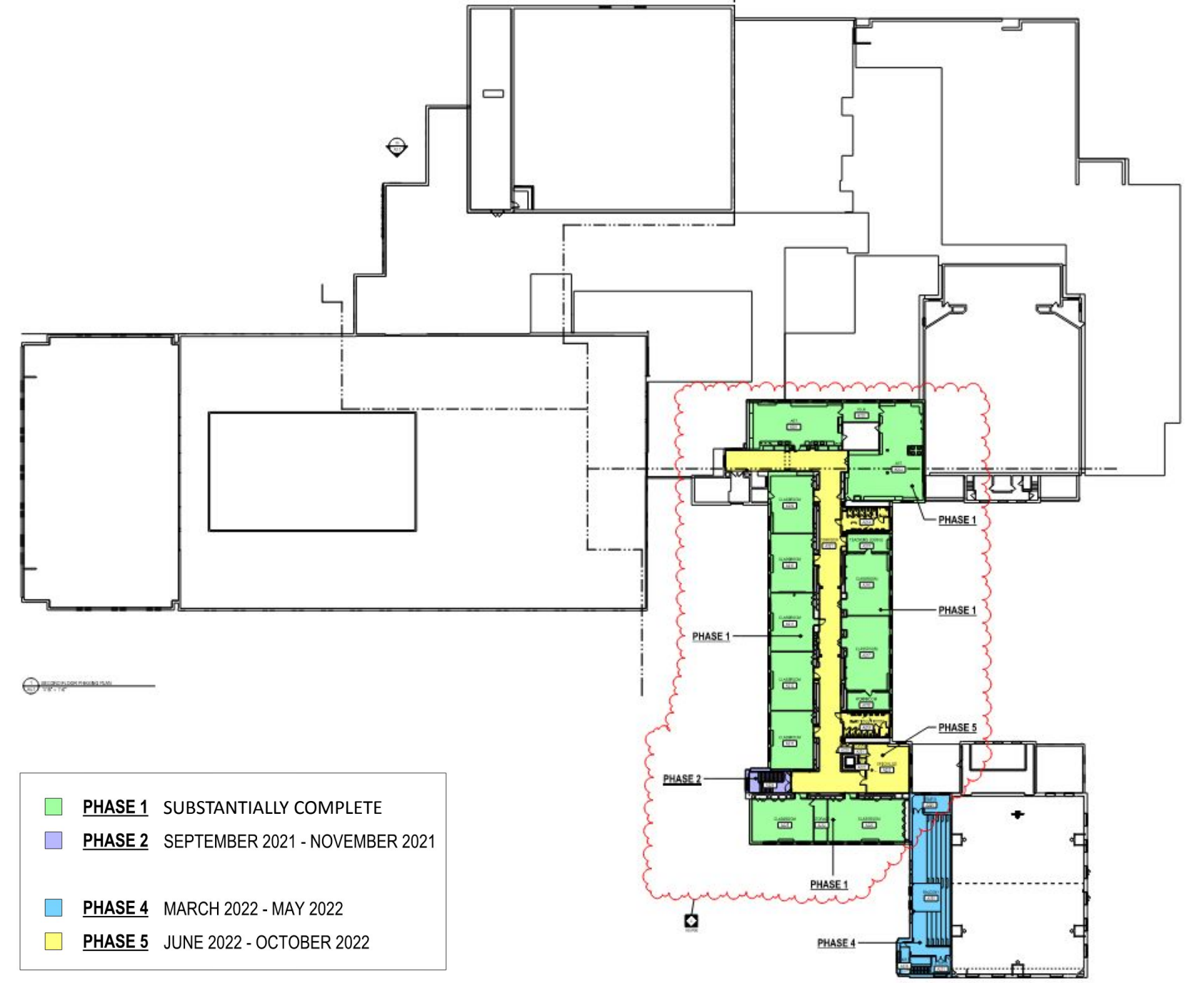
- Yellow - 8/28
  - Ceiling
  - Cleaning
  - Painting
- Purple -
  - Substantially completed
  - Cleaned
- Blue -
  - Substantially completed
  - Cleaned

# WAHS PHASING PLAN – FIRST FLOOR



- Yellow
  - Ceiling
  - Flooring
  - Painting
  - Cleaning
- Purple
  - Painting
  - Cleaning
- Blue
  - Windows
  - Cleaning

# WAHS PHASING PLAN – SECOND FLOOR



- Yellow
  - Substantially Complete
- Green
  - Substantially Complete
- Purple
  - Paint
  - Cleaning
- Blue
  - Substantially Complete



# WAHS CONSTRUCTION PHOTOS



# WAHS CONSTRUCTION PHOTOS



WAHS CONSTRUCTION PHOTOS



## Construction Substantial Completion Schedule - JSHS

Classrooms - 8/23/22

Media Center - 8/24/22

Cafeteria^ - 10/1/22

JH Gym - 8/29/22

^New addition only, will have kitchen for meal prep and cafe space for students.

# Remaining Project Funds:

## Overall Budget (*per Architect's Budget*)

Bond proceeds for project:	\$25,000,000
Original budget:	23,998,028
Plus Projected CO over budget:	<u>150,596</u>
Revised Budget:	\$24,148,624
Less Budget Lines Not Needed <sup>^</sup> :	(526,337)
Estimated total spent on project:	\$23,622,287

<sup>^</sup>*Line item not needed: Financing Fees*

# Remaining Project Funds:

Contingency (*per Architect's Budget*)

	<u>JSHS</u>	<u>WHEC</u>	<u>WREC</u>
Budget:	\$400,000	\$450,000	\$50,000
Approved:	656,841	304,775	4,672
Proposed <sup>^</sup> :	<u>128,557</u>	<u>(44,249)</u>	<u>0</u>
Balance:	(385,398)	189,474	45,328

Total Amount Over Budget \$(150,596)

*<sup>^</sup>includes placeholder of \$120,000 for fire alarm system*